

MOTOPIA

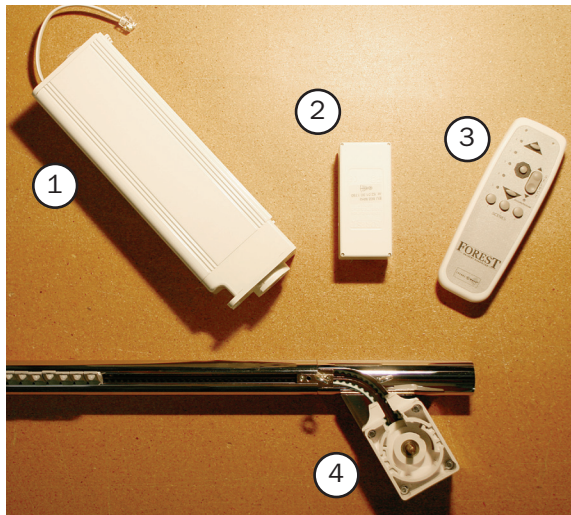
24V MOTOR ATTACHMENT INFO

Visual instructions for attaching the 24V Motor to the Motor Housing Assembly

STEP 1:

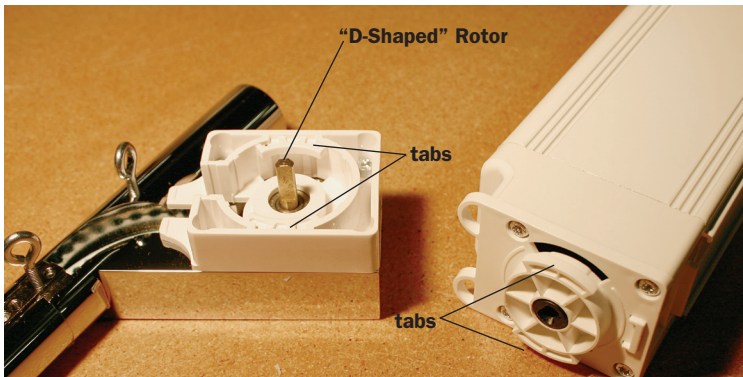
Know the parts.

1. **24V Motor**
#912440
2. **Receiver**
#912470
3. **Remote Control**
#912480
4. **Motor Housing Assembly**
#912479



STEP 2:

Slide the receiver (#912470) into the channel provided on the 24V Motor (#912440), then connect the cable to Port 1 on the motor.



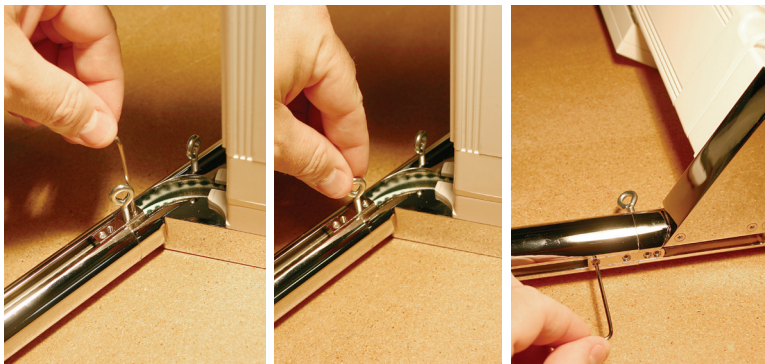
STEP 3:

Align the tabs so that the 24V Motor tabs slip past the tabs of the Motor Housing Assembly, and slip the motor over the "D-shaped" rotor.



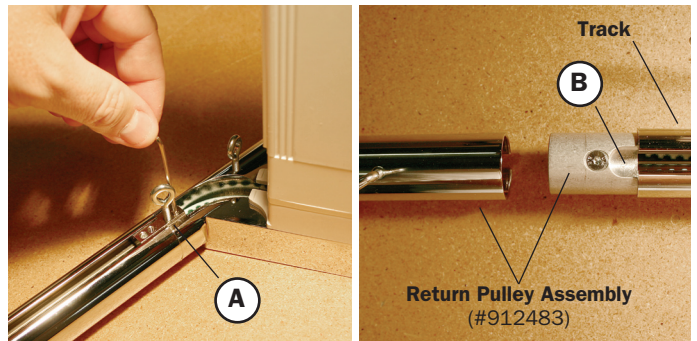
STEP 4:

Turn the 24V Motor until it is aligned as shown in the second photo in this sequence. Then push the provided tab down to lock the 24V Motor into place on the Motor Housing Assembly.



STEP 5:

The set screws and eyelet in these illustrations are tightened before they leave our warehouse. Please verify that they are still tightened before attaching system to wall.



TO ADD OR REMOVE GLIDERS:

The total number of gliders can be adjusted by removing piece **A** near the motor or channel **B** at the opposite end of the track. (remove the Return Pulley Assembly sleeve to see channel **B**)

Important Note: For easier installation the 24V Motor should be attached to the Motor Housing Assembly BEFORE installing the drapery hardware system to the wall. Tampering with the motor (beyond these instructions) for any reason immediately voids the manufacturer warranty. If your drapery treatment touches the ground during operation it will shorten the life of your motor and void the warranty.

 **VESTA**
DECORATIVE HOME ACCENTS