





Eggshell



Almond



Eucalyptus



Seafoam



Pumice



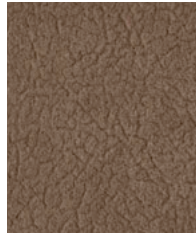
Sky



Silver Fox



Stone



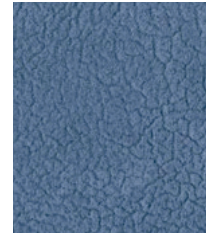
Mink



Apple



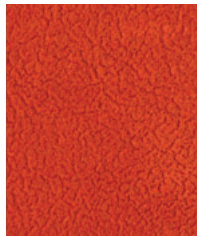
Poppy



Slate



Gunmetal



Cinnabar



Henna



Meadow



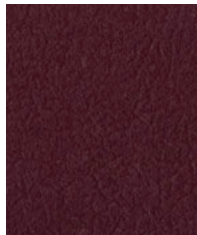
Pomegranate



Peacock



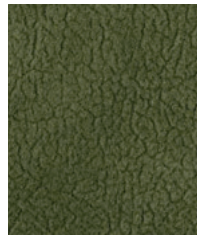
Storm



Raisin



Dark Coffee



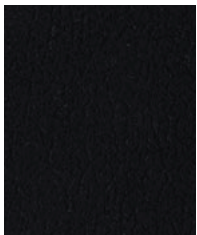
Ivy



Brick



Ink



Onyx

Construction

Construction	Values	Test Method
Surface Composition	60% Acrylic / 40% Nylon	
Backing Composition	100% Polyester	ASTM D 751-06
Finished Width	54" Width	ASTM D 751-06
Repeat	None	
Railroaded	No	
Put-up	40 yards	
Cleaning Code	W	

Performance

Performance	Minimum Values	Test Method
Grab Tensile	100 lbs./in. × 100 lbs./in. min.	ASTM D5034
Tear Strength	10 lbs./in. × 10 lbs./in. min.	ASTM D4034
Seam Slippage	25 lbs./in. × 25 lbs./in. min.	ASTM D2261
Crock Resistance	Wet-5; Dry-5	AATCC 8
Wyzenbeek Abrasion	200,000 cycles, #10 cotton duck	ASTM D 4157
UV Stability	40 hours (4-5)	AATCC 16.3-2012

Flammability

California Technical Bulletin 117-2013, Sec. 1	Pass
FMVSS 302 / CMVSS 302	Pass
I.M.O. A.652(16) 8.2 & 8.3	Pass
NFPA 260	Pass
U.F.A.C. Class I	Pass

Environmental

1. No anti-microbial additives
2. Does not contain PFAS, PFOA
3. Prop 65 compliant
4. No chemical flame retardants, CA AB2998 compliant
5. REACH, RoHS, and LEED compliant

Suitable Applications Commercial

Cleaning and Disinfecting

Remove ordinary dirt and smudges with mild soap and water. A 10:1 ratio of water to bleach solution may be used as a disinfectant. Rinse the surface with clean water after disinfecting. Dry with a soft, lint-free cloth or towel. We recommend that you use Clorox Healthcare and Clorox Pro products to disinfect Mitchell products in commercial settings.

