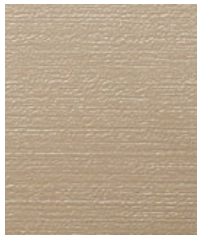
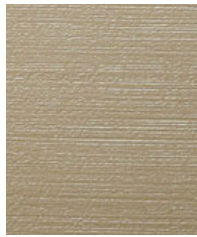


Sisal



Pale



Thatch



Pebble



Mesa



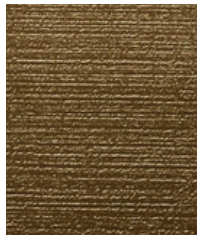
Aqua



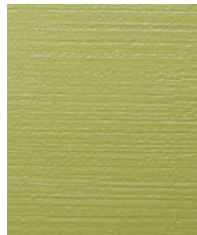
Inlet



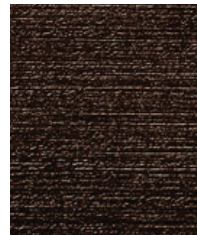
Platinum



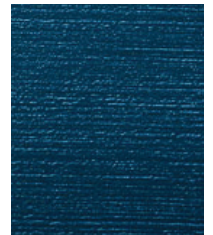
Latte



Field



Cocoa



Reef



Carbon



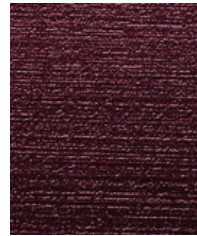
Metal



Root



Moss



Aubergine



Harbor



Black

**Construction**

Surface Composition  
Finished Width  
Backing Composition  
Put-up  
Repeat  
Cleaning Code  
Railroaded

**Values**

100% Polycarbonate  
54" min.  
50% Rayon, 50% Polyester  
30 yards  
None  
WS  
No

**Test Method**

ASTM D 751-06  
ASTM D 751-06

**Performance**

Adhesion  
Grab Tensile  
Trap Tear  
Seam Strength  
Stretch at 15# MD (warp) xCD (fill)  
Flex Resistance  
Blocking  
Crock Resistance  
Wyzenbeek Abrasion (#10 Cotton Duck)  
Hydrolysis Resistance  
  
Colorfastness to Light  
Blue Dye Transfer Resistance  
Cold Crack (5# roller)

**Values**

4 lbs./in. x 4 lbs./in. min.  
150 lbs./in. x 130 lbs./in. min.  
20 lbs./in. x 15 lbs./in. min.  
85 lbs./in. x 80 lbs./in. min.  
4% x 18%  
25,000 cycles  
No. 1 - PASS  
Wet-5; Dry-5  
300,000 cycles  
15 weeks  
15 weeks  
1000 hours  
Dry-4-5; Wet-4-5  
-20°F

**Test Method**

ASTM D 751-06  
ASTM D 751-06  
ASTM D 751-06  
ASTM D 751-06  
SAE J855, 2002  
ASTM D 2097-91  
FTMS 191A-TM5872  
AATCC 8-2007  
ASTM D 4157-13  
ASTM D 3690-02  
ISO 1419: 1995 (E)  
ASTM D 4329-05  
LP-463KC-04-03  
CFFA-6A

**Flammability**

California Technical Bulletin 117-2013, Sec. 1 Pass  
FMVSS/CMVSS #302 Pass  
IMO A.652(16)8.2 Pass  
NFPA 260 Pass  
U.F.A.C. Class I Pass

**Environmental**

1. No anti-microbial additives
2. Does not contain PFAS, PFOA
3. Prop 65 compliant
4. No chemical flame retardants, CA AB2998 compliant
5. REACH, RoHS, and LEED compliant

**Suitable Applications** Contract, Healthcare, Hospitality, Residential

**Cleaning and Disinfecting**

Remove ordinary dirt and smudges with mild soap and water. A 10:1 ratio of water to bleach solution may be used as a disinfectant. Rinse the surface with clean water after disinfecting. Dry with a soft, lint-free cloth or towel. We recommend that you use Clorox Healthcare and Clorox Pro products to disinfect Mitchell products in commercial settings.



The Mitchell Group is a compatibility partner with Clorox Healthcare

The Mitchell Group  
7040 N. Austin Avenue | Niles, IL 60714  
847.647.7300 | mitchellfauxleathers.com