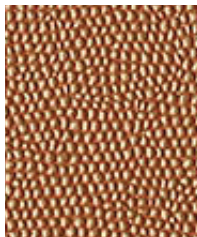




Crystal



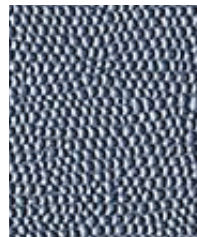
Amber



Tourmaline



Nickel



Sapphire

Construction	Values	Test Method
Surface Composition	100% PVC	
Backing Composition	100% Polyester	ASTM D 751-06
Finished Width	54" min.	ASTM D 751-06
Repeat	None	
Railroaded	No	
Put-up	30 yards	
Cleaning Code	W	

Performance	Values	Test Method
Grab Tensile	110 lbs./in. × 95 lbs./in. min.	ASTM D 751-06
Trap Tear	30 lbs./in. × 50 lbs./in. min.	ASTM D 751-06
Seam Strength	50 lbs./in. × 40 lbs./in. min	ASTM D 751-06
Adhesion	4 lbs./in. × 4 lbs./in. min.	ASTM D 751-06
Stretch @ 15# (MD×CD)	7% × 20%	ASTM D 751-06
Flex Resistance	25,000 Cycles	ASTM D 2097-03(2010)
Blocking	No. 1 - Pass	FTMS 191A-TM5872
Cold Crack Resistance	-20°F - Pass	CFFA-6a
Crock Resistance	Dry-4; Wet-4	AATCC 8-2007
Mildew Resistance	Pass	ASTM G-21
Anti-bacterial	Pass	AATCC 147-2004
Wyzenbeek Abrasion	500,000 cycles, #10 cotton duck	ASTM D 4157-13
Colorfastness to Water: Sea	Shade Change-5 / Staining -5	AATCC 106-2013
Colorfastness to Light	650 hours	ASTM D 4329-05

Flammability	Values
Boston Fire Dept. IX-1	Pass
California Bulletin 117-2013, Section 1	Pass
FAA FAR 25.853	Pass
I.M.O. A.652 (16) Sec. 8.2 & 8.3	Pass
MVSS/CMVSS #302	Pass
NFPA 260	Pass
NFPA 701 Small Scale	Pass
U.F.A.C. Class I	Pass

Environmental
1. No anti-microbial additives
2. Does not contain PFAS, PFOA
3. Prop 65 compliant
4. No chemical flame retardants, CA AB2998 compliant
5. RoHS compliant – Phthalate free

**Suitable Applications** Commercial; Outdoor/Marine

### Cleaning and Disinfecting

Remove ordinary dirt and smudges with mild soap and water. A 10:1 ratio of water to bleach solution may be used as a disinfectant. Rinse the surface with clean water after disinfecting. Dry with a soft, lint-free cloth or towel. We recommend that you use Clorox Healthcare and Clorox Pro products to disinfect Mitchell products in commercial settings.

