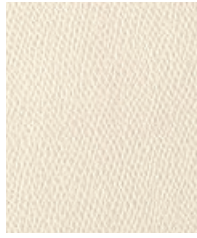
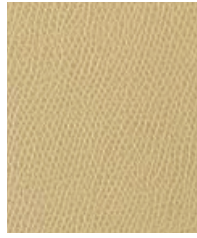


White



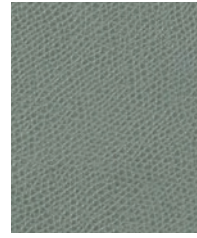
Canvas



Butter



Dijon



Sea Water



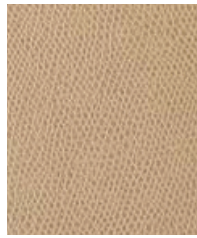
Aegean



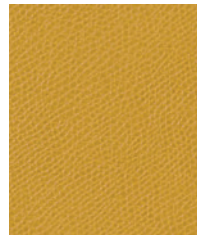
Ecrú



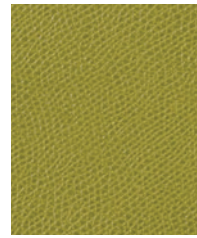
Cream



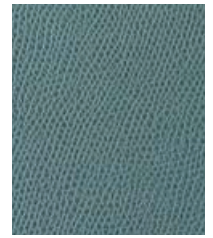
Almond



Honey



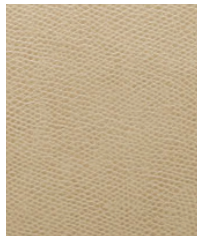
Field



Patriot



Dove



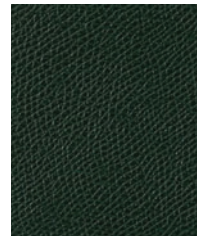
Sand



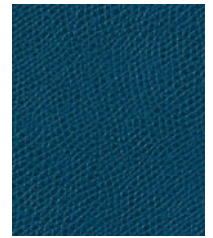
Desert



Brown Sugar



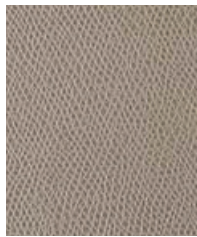
Forest



Marlin



Pavement



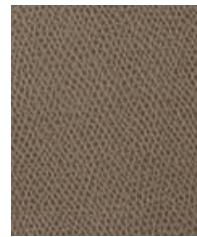
Taupe



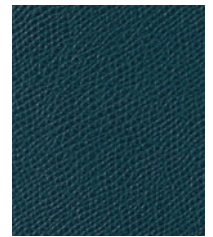
Toffee



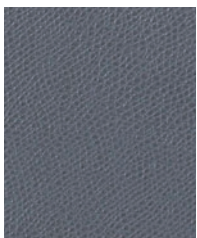
Rattan



Mink



Ocean



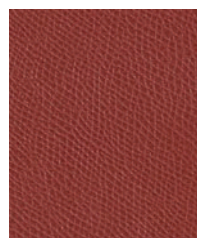
Metal



Iris



Truffle



Penny



Merlot



Cadet



Onyx



Chocolate

**Construction**

	<b>Values</b>	<b>Test Method</b>
Surface Composition	100% Polyurethane	
Backing Composition	100% Polyester	ASTM D 751-06
Finished Width	54" min.	ASTM D 751-06
Repeat	None	
Railroaded	No	
Put-up	30 yards	
Cleaning Code	W/S	

**Performance**

	<b>Values</b>	<b>Test Method</b>
Grab Tensile	50 lbs./in. × 50 lbs./in. min.	ASTM D 751-06
Trap Tear	15 lbs./in. × 15 lbs./in. min.	ASTM D 751-06
Seam Strength	40 lbs./in. × 40 lbs./in. min.	ASTM D 751-06
Adhesion	4 lbs./in. × 4 lbs./in. min.	ASTM D 751-06
Stretch @ 15# (MD×CD)	5% × 10%	ASTM D 751-06
Flex Resistance	25,000 cycles	ASTM D 2097-91
Blocking	No. 1 - Pass	Fed. Std. 191A-TM5872
Crock Resistance	Dry-4; Wet-4	AATCC 8-2013
Wyzenbeek Abrasion	100,000 cycles, #10 Cotton Duck	ASTM D 4157-13
Hydrolysis Resistance	10 weeks	ISO 1419: 1995 E
UV Stability	150 hours	ASTM D 4329-05
Blue Dye Transfer Resistance	Dry 4-5; Wet 4-5	LP-463KC-04-03
Cold Crack	-20°F	CFFA-6A

**Flammability**

California Technical Bulletin 117-2013, Sec. 1	Pass
IMO A.652(16)8.2	Pass
NFPA 260	Pass
U.F.A.C. Class I	Pass

**Environmental**

1. No anti-microbial additives
2. Does not contain PFAS, PFOA
3. Prop 65 compliant
4. No chemical flame retardants, CA AB2998 compliant
5. REACH, RoHS, and LEED compliant

**Suitable Applications** Contract, Healthcare, Hospitality, Residential

**Cleaning and Disinfecting**

Remove ordinary dirt and smudges with mild soap and water. A 10:1 ratio of water to bleach solution may be used as a disinfectant. Rinse the surface with clean water after disinfecting. Dry with a soft, lint-free cloth or towel. We recommend that you use Clorox Healthcare and Clorox Pro products to disinfect Mitchell products in commercial settings.



The Mitchell Group is a compatibility partner with Clorox Healthcare

The Mitchell Group  
7040 N. Austin Avenue | Niles, IL 60714  
847.647.7300 | mitchellfauxleathers.com