

Cottonwood



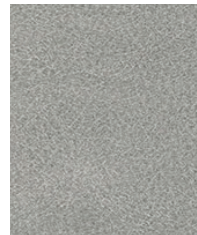
Clay



Tan



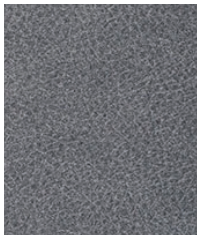
Harvest



Flint



Pinetop



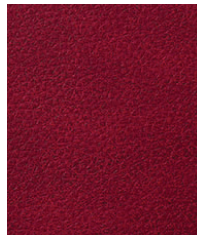
Coyote



Oak



Cider



Red Velvet



Marengo



Verdant



Moss



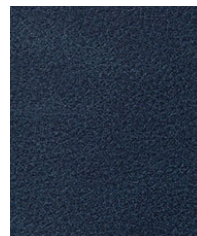
Brown



Mahogany



Red Rock



Oceanic

Construction

Construction	Values	Test Method
Surface Composition	100% Polycarbonate	
Finished Width	54" min.	
Backing Composition	50% Rayon, 50% Polyester	ASTM D 751-06
Put-up	30 yards	ASTM D 751-06
Repeat	None	
Cleaning Code	WS	
Railroaded	No	

Performance

Performance	Values	Test Method
Adhesion	4 lbs./in. × 4 lbs./in. min.	ASTM D 751-06
Grab Tensile	150 lbs./in. × 130 lbs./in. min.	ASTM D 751-06
Trap Tear	20 lbs./in. × 15 lbs./in. min.	ASTM D 751-06
Seam Strength	85 lbs./in. × 80 lbs./in. min.	ASTM D 751-06
Stretch at 27# MD (warp) × CD (fill)	4% × 18%	SAE J855, 2002
Flex Resistance	25,000 cycles	ASTM D 2097-91
Blocking	No. 1 - PASS	FTMS 191A-TM5872
Crock Resistance	Wet-5; Dry-5	AATCC 8-2007
Wyzenbeek Abrasion (#10 Cotton Duck)	500,000 cycles	ASTM D 4157-13
Hydrolysis Resistance	15 weeks	ASTM D 3690-02
	15 weeks	ISO 1419: 1995 (E)
Colorfastness to Light	1000 hours	ASTM D 4329-05
Blue Dye Transfer Resistance	Dry-4-5; Wet-4-5	LP-463KC-04-03
Cold Crack (5# roller)	-20°F	CFFA-6A

Flammability

California Technical Bulletin 117-2013, Sec. 1	Pass
FMVSS/CMVSS #302	Pass
IMO A.652(16)8.2	Pass
NFPA 260	Pass
U.F.A.C. Class I	Pass

Environmental

1. No anti-microbial additives
2. Does not contain PFAS, PFOA
3. Prop 65 compliant
4. No chemical flame retardants, CA AB2998 compliant
5. REACH, RoHS, and LEED compliant

Suitable Applications Contract, Healthcare, Hospitality, Residential

Cleaning and Disinfecting

Remove ordinary dirt and smudges with mild soap and water. A 10:1 ratio of water to bleach solution may be used as a disinfectant. Rinse the surface with clean water after disinfecting. Dry with a soft, lint-free cloth or towel. We recommend that you use Clorox Healthcare and Clorox Pro products to disinfect Mitchell products in commercial settings.



The Mitchell Group is a compatibility partner with Clorox Healthcare

The Mitchell Group
7040 N. Austin Avenue | Niles, IL 60714
847.647.7300 | mitchellfauxleathers.com